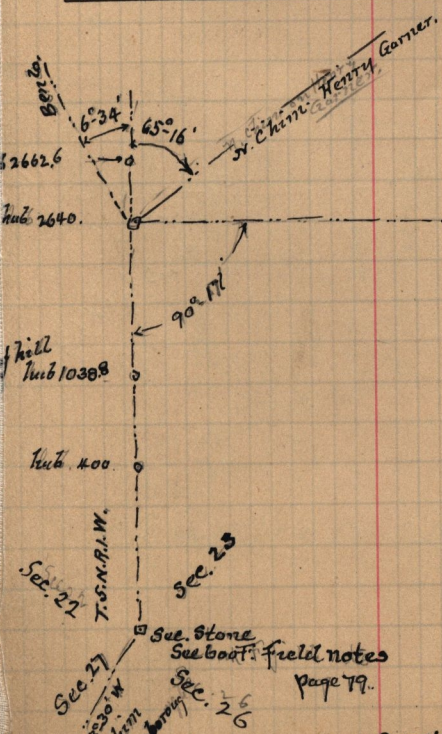


- June 17 1893 -

Copy of description entered in deed from Geo. Brown to A. Beckstead, by self according to survey made for him on page 111. — Pt S.E. 1/4 Sec. 28. T.7.N. R.1.W. Beg. at a point, 1320. ft N. and 198. ft. E. of S.E. Cor. sd 1/4 Sec. Running thence W 1022.6 ft. along the N. line of the S 1/2 of said 1/4 Sec. thence S 4°-16'-W. 242.70 ft. thence N 88°-00' E. 578. ft. to channel of "Rice Creek", thence following up the channel of said creek in a N.E. course to beg. cont. 4.02 a



Self & Enoch Garner Chains

June 18<sup>th</sup> 1893.

Survey made for Henry Garner.